

## Data sheets

Air cooled condensing units > LB2 Units - Temperate climate zones

| Technical data:                                    |             |                 |
|--|-------------|-----------------|
| Compressor   |             | D3-13.1Y        |
| Weight (without housing)                           | kg          | 76              |
| Housing weight                                     | kg          | 24              |
| Total length (without housing)                     | mm          | 762             |
| Total width (without housing)                      | mm          | 700             |
| Total height (without housing)                     | mm          | 531             |
| Total length (with housing)                        | mm          | 762             |
| Total width (with housing)                         | mm          | 723             |
| Total height (with housing)                        | mm          | 556             |
| Suction line connection                            |             | 28.6 mm - 1"1/8 |
| Liquid line connection                             |             | 12.7 mm - 1/2"  |
| Number of fan                                      |             | 1               |
| Fan motor power supply at 50 Hz (other on request) | V/ph/Hz     | 220-240V/1/50Hz |
| Current for one fan at 50 Hz                       | A           | 0.87            |
| Power for one fan at 50 Hz                         | W           | 200             |
| Air flow to condenser at 50 Hz                     | m3/h [50Hz] | 2900            |
| Fan motor power supply at 60 Hz (other on request) | V/ph/Hz     | 220-240V/1/60Hz |
| Current for one fan                                |             | 1.13            |
| Power for one fan                                  |             | 260             |
| Air flow to condenser at 60 Hz                     | m3/h [60Hz] | 3480            |
| Condenser volume                                   | l           | 2.46            |
| Liquid Receiver                                    |             | USLR03-M        |
| Receiver volume                                    | l           | 2.2             |
| R134a  | kg          | 2.3             |
| R404A - R507A                                      | kg          | 2.2             |
| R22  | kg          | 2.3             |
| R407C  | kg          | 2.3             |

## Data sheets

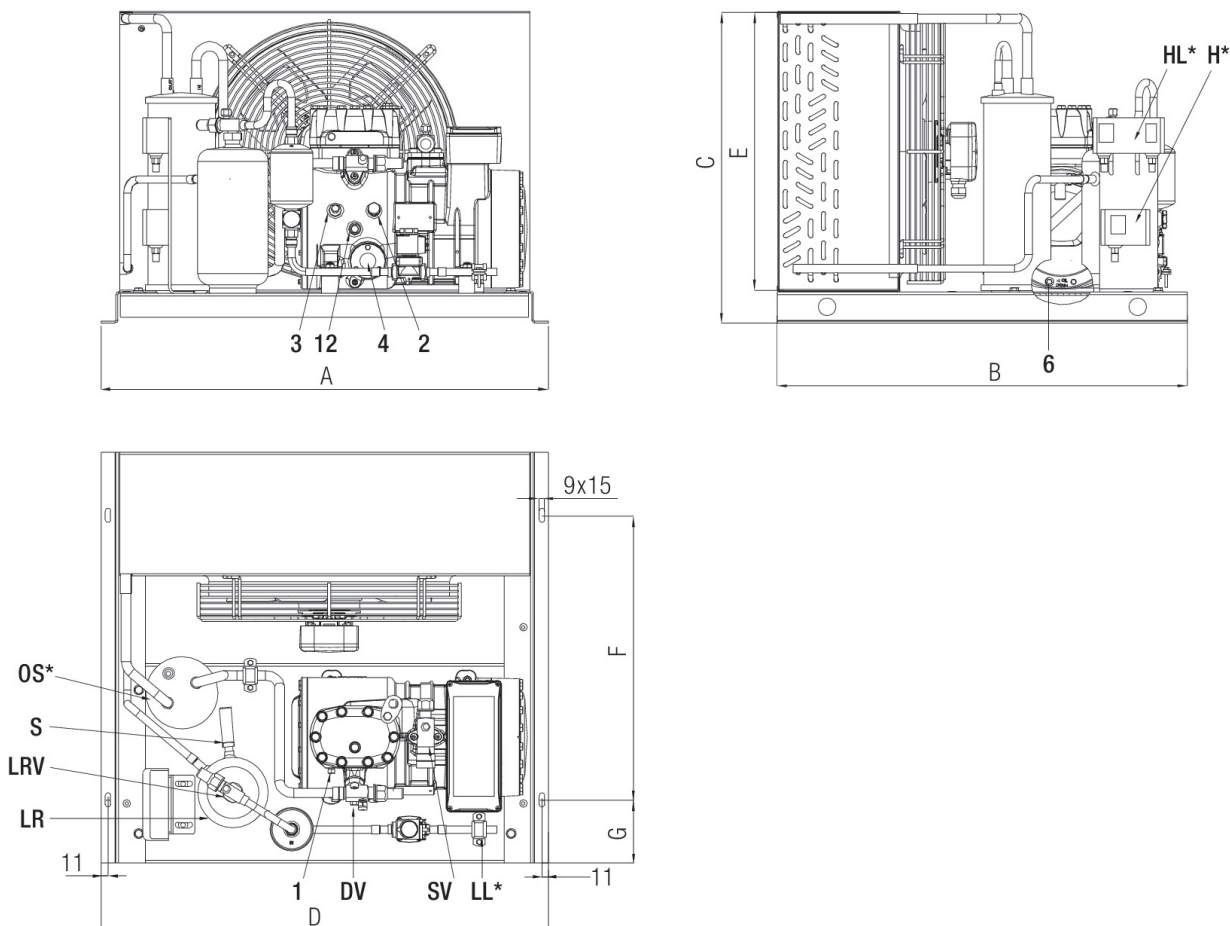
Air cooled condensing units > LB2 Units - Temperate climate zones

| Accessories:  |                      |
|---|----------------------|
| Oil separator   | USOS16               |
| Package (sight glass, filter dryer, shut-off valve, high/low pressure switch, | Without electric box |
| Protective housing: shipped stand alone [ 1 ]                                 | USHAOU20             |
| Check valve on the discharge line   | T00EC1351LB          |
| Phase cut control for single phase fan motor [ 2-3 ]                          | T00ECA1485           |
| Solenoid valve on the liquid line (24Vac) [ 4 ]                               | T00ECA1297LB         |
| Compressor VS with integrated inverter  | D3-13.1Yvs           |

- 1 Other motor voltage available on request
- 2 Maximum frequency depends on the working conditions: use the FSS.3 (Frascold selection software)
- 3 Mineral oil available on request

## Data sheets

Air cooled condensing units > LB2 Units - Temperate climate zones



### Dimensional drawing:

|    |                           |          |       |
|----|---------------------------|----------|-------|
| A  | Length (A)                | mm       | 762   |
| B  | Width (B)                 | mm       | 700   |
| C  | Height (C)                | mm       | 531   |
| D  | Condenser length (D)      | mm       | 700   |
| E  | Condenser height (E)      | mm       | 478   |
| F  | Base mounting (F)         | mm       | 485   |
| G  | Base mounting (G)         | mm       | 107.5 |
| 1  | High pressure plug (1)    | 1/8" NPT |       |
| 2  | Low pressure plug (2)     | 1/8" NPT |       |
| 3  | Oil charge plug (3)       | 1/4" GAS |       |
| 4  | Oil level sight glass (4) | -        |       |
| 5  | Crankcase heater (5)      | -        |       |
| 6  | Oil drain plug (6)        | M8 x 22  |       |
| 12 | Oil return plug (12)      | 1/8" NPT |       |
| AC | Air cooled condenser      | -        |       |
| AF | Fan motor                 | -        |       |

|    |                          |   |
|----|--------------------------|---|
| DV | Discharge valve (DV)     | - |
| SV | Suction valve (SV)       | - |
| LR | Liquid receiver          | - |
| LR | Liquid valve             | - |
| S  | Safety valve             | - |
| O  | Oil separator (OS*)      | - |
| EB | Electric box             | - |
| HL | High/low pressure switch | - |
| H* | High pressure switch     | - |
| LL | Liquid line              | - |
| NP | Name Plate (NP)          | - |